



MIDTOWN
MODERN



GuocoLand

buBus
CUBE

Artist's Impression
艺术渲染图

Guoco Midtown Presents the City of the Future

国浩时代城： 未来城市的启幕者



We live in a time of great change and upheaval; this much is certain, and not much else.

With each wave of technological advancement, industries are disrupted and lives, changed. In densely packed cities, communities become ever more fragmented and urban loneliness rears its ugly head.

Happiness has never been easier to achieve with all our modern affluences at our fingertips; but our modern afflictions render our wellbeing ever more elusive.

In our unrelenting pursuit of the good life, it is easy to forget that which truly matters: a purposeful life, meaningful relationships, a peace of mind. Yet, what good are all the riches and technology in the world if they cannot grant us happiness?

At Guoco Midtown, cultivate a true and enduring sense of wellbeing by looking to the wisdoms of the past and adapting them for the future.

Remember the joys of being a part of a thriving community when you engage with others in a culture of learning, playing, working, and living together.

Live your best life in a thoughtfully designed environment where adaptable spaces, abundant light, and quality materials anticipate your every need.

Amidst the hustle and bustle of this metropolis, come home and find comfort in your personal sanctuary of green with your family.



The latest member of the Guoco Midtown family, Midtown Modern invites you to enjoy all the conveniences of urban living while staying connected to nature. Lay down roots in this lush garden home at the heart of the city, and become a part of the lively Guoco Midtown community.

At Guoco Midtown, change is not a thing to be feared, because it has been expected and catered for. Every square inch of this mixed-use development in the dynamic city has been designed with adaptability in mind. From residences to office tower and network hub, every space has the capacity to grow and evolve with its users' needs.

At the office tower, GuocoLand's flexible leasing style and multipurpose network hub empower commercial tenants to react nimbly to economic winds of change.

At its residences, adaptable living spaces and a rich array of shared facilities usher in a new era in communal living, to afford residents a future-forward vision of luxury.

When the only constant is change, the best way to be prepared is to make room for the unpredictable. At Midtown Modern, not only is your future secure – it is also one where your family's wellbeing can flourish.

Be a part of Guoco Midtown and its redefinition of modern luxury: connect with nature and community while keeping your finger on the beating pulse of the city. At Midtown Modern, your happiness is yours to shape.



我们生活在一个不断变化、充满挑战的时代，这一点是毋庸置疑的。

伴随着一次又一次技术进步的浪潮，工业不断发展，我们的生活也在不断地改变。在人口高度密集的城市里，社会却越来越分散，人们的孤独感也日渐强烈。

我们的社会财富在不断地累积，曾经日思夜想的物质需求如今唾手可得，但同时，我们却发现财富并不曾增强人生的幸福感。

在我们不断追求美好生活的过程中，很容易忘记那些真正重要的东西：有目标的人生；有意义的人际关系；更为重要的是平和的心态。但是，如果我们所拥有的财富和技术都不能给我们带来这些品质，那还有什么可以让我们感到幸福呢？

在国浩时代城，我们通过借鉴过去以往积累的社会智慧，并将这些黄金法则运用到未来规划中，希望以此培养一种真实而持久的幸福感。

生活在国浩时代城精心打造的社区里，你可以和其他人一起融入学习、娱乐、工作和生活的文化中，感受这个社区蓬勃发展的活力。

灵活的空间设计，丰富的光影变化和高品质的材料运用，这里能满足你对美好生活的所有设想。在熙熙攘攘的城市中奔波劳累一天后，就能回到这个温暖的避风港，和家人一同感受最真实的幸福。



作为国浩时代城家族的最新成员，名汇庭苑能让您在活力四射的国浩时代城里，兼得一片自然的谧静。在此，您既可体验城市生活之便利，又可欣赏自然花园之静美；在此，人与城市、自然和谐而处，生活的价值，在空间意境里焕新重生。

在新加坡这个充满活力的城市，国浩时代城这个城市综合项目每一处的设计都考虑到了适应性，从住宅、写字楼到时代城会所，这里的每寸空间都能够随着用户的需求而改变和发展。在国浩时代城，不必惧怕改变，因为我们早已为日新月异的未来做好了准备。

在写字楼内，灵活的商业租赁模式和全新概念的时代城会所能够灵活地应对经济环境的起伏。

在住宅区域，国浩时代城的两个住宅项目 – 滨海名汇和名汇庭苑拥有适应性极强的生活空间和丰富的共享设施，引领了城市未来生活的新潮流，为住户提供了前瞻性的视野。

时移境迁，时代的改变永远无法避免，而最好的应对方式就是为不可预测的未来做好充足的准备。国浩时代城，以其超越时代的设计理念与您一起迎接未来，谱写人、城市、自然的永恒赞歌。





Overview of Guoco Midtown 国浩时代城

An integrated mixed-use development
sitting on 3.2 hectare of land directly
above Bugis MRT interchange

占地3.2公顷的地标性城市综合体项目
坐落于武吉士地铁转换站之上



MIDTOWN MODERN
558 LUXURY GARDEN HOMES
名汇庭苑/558间花园豪宅单位

Lush garden homes for family living,
directly above Bugis MRT Interchange

郁郁葱葱的花园住宅，与武吉士地铁转换站直接相连



MIDTOWN BAY
219 PREMIUM BUSINESS HOMES
滨海名汇/219间高端商业住宅

Home office concept units with access to
a wide variety of facilities within Guoco Midtown

家庭办公概念，坐拥国浩时代城内的各类商业
和公共设施



OFFICE TOWER/770,000 SQ FT
办公大厦/77万平方英尺

Premium Grade A offices with flexible and efficient
floor plates, introducing a new way of office leasing

优质甲级写字楼，拥有灵活的布局和高效的
楼面空间，开创写字楼商业租赁全新模式



NETWORK HUB/80,000 SQ FT
BUSINESS AND LIFESTYLE HUB
时代城会所/8万平方英尺商业休闲会所

The social heart of Guoco Midtown, incorporating
the best of business and leisure

国浩时代城的社交中心，集商务和休闲于一体



LANDSCAPE & PUBLIC SPACES
MORE THAN 400,000 SQ FT
园林景观和公共空间超过40万平方英尺

More than 20 different plazas and gardens,
providing ample spaces for social interaction
and large-scale events

拥有超过20个不同的广场和花园，
为公众社交和大型活动提供充足的场所



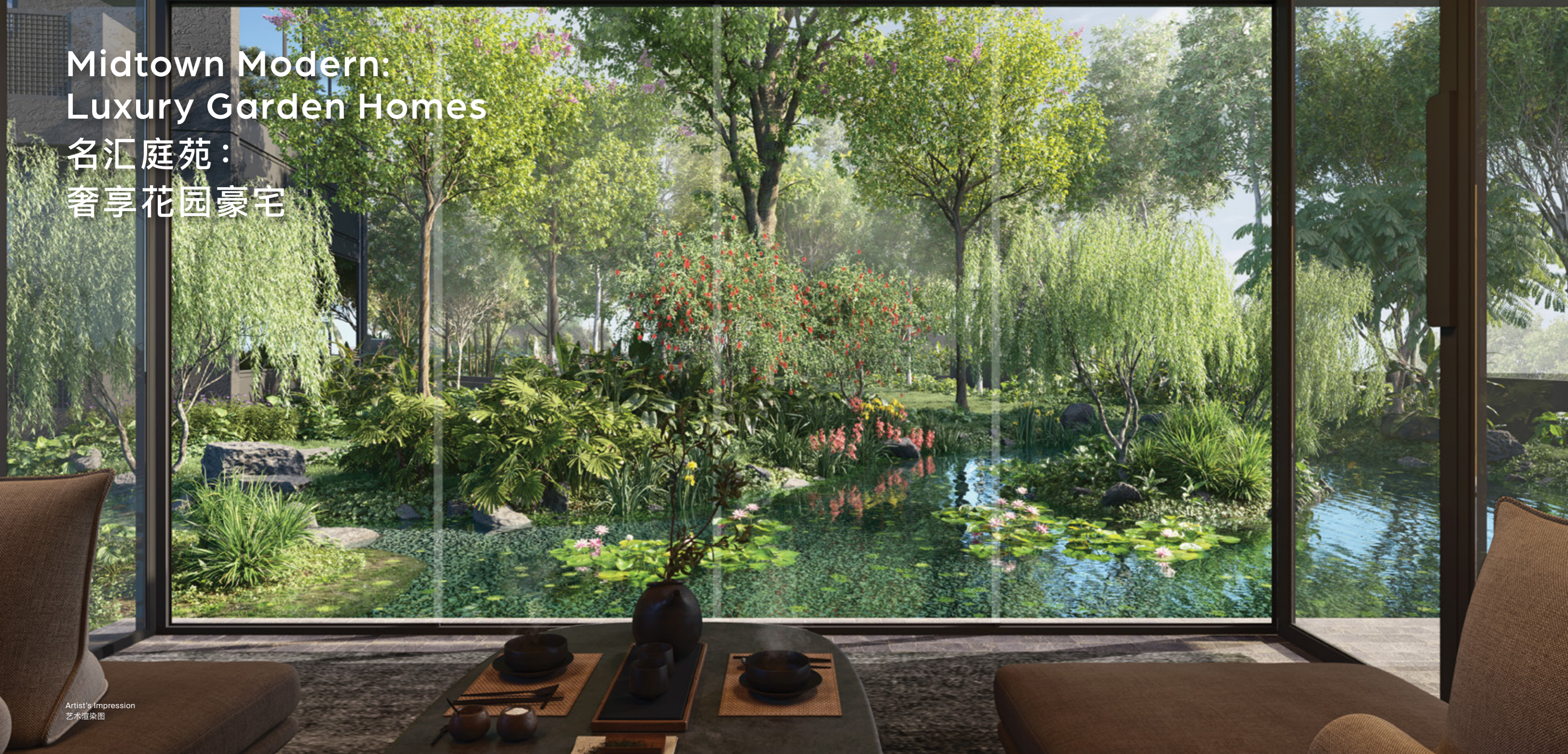
3 RETAIL VILLAGES/50,000 SQ FT
3个零售中心/5万平方英尺

Offering multi-dimensional experiences
combining shopping, dining and entertainment

集购物、餐饮、娱乐于一体，提供多维体验

Midtown Modern: Luxury Garden Homes

名汇庭苑： 奢享花园豪宅



Artist's Impression
艺术渲染图

Having an expanse of greenery in the heart of the city, Midtown Modern's warm-toned residential towers stand out from the surrounding sea of skyscrapers. At Midtown Modern, one can find rare respite in luxurious garden homes while having the ease and prestige of urban living. The lush, sprawling third-storey garden is a key feature of the development. In a densely populated urban district, the naturalistic landscape shaded with a thick canopy of trees invite calm and rejuvenation into busy lives.

Home extends beyond the apartment at Midtown Modern. Explore the diverse common areas that can be exclusively enjoyed or shared with a warm community. Work in the plush, hotel-like lobby, or rally with fellow residents at the sports bar-themed pavilion. Wine and dine your guests at the clubhouse and rooftop pavilions impressively furnished with kitchen equipment. From working to entertaining, flexible common areas adapt to your every need.

GuocoLand's resource-efficient and community-minded approach towards urban design pre-empt the future of city

living by encouraging communities of young families and professionals to flourish together. In times of rapid ecological change, Midtown Modern's innovative green strategies also help to safekeep today's world for future generations. The management of the entire residential ecosystem is optimised, from energy to water and waste, greenery to lighting and cooling systems. With its sister projects Midtown Bay and Guoco Midtown both awarded Green Mark Award (Platinum) from the Building and Construction Authority (BCA), Midtown Modern homeowners are in the good hands of eco-conscious sustainability experts.

And when you venture out into Guoco Midtown, an extensive network of underpasses, sheltered walkways and MRT lines connect you to the city and beyond. Celebrate an urban experience where cars are no longer a necessity. With the convenience of a walkable city, you can be part of a greener future.

At Midtown Modern, the future is already here.

在充斥着玻璃和混凝土结构摩天大楼的新加坡中央商务区，名汇庭苑以其两座暖砖色调的住宅楼脱颖而出。它的每一寸设计都告诉人们，这里是一个舒适的花园式住宅，正如城市中的度假胜地。它以其富有质感却毫不喧嚣的外观；效法自然石材和砖石结构营造的内部空间，开辟出了一个繁华都市里的桃源谧境。这里，仿若一个都市中的度假胜地。

如果您住在名汇庭苑，那您的家绝不仅仅局限于您的单位，大片的公共区域等着您去探索开发。酒店式的大堂既可以作为您的家庭办公场所，也可以在此与朋友或商业伙伴小聚畅谈；您可在禅宗式的花园亭子中阅读或冥想；抑或在花园和屋顶露台里举办您的晚宴或品酒会。名汇庭苑的公共区域灵活至极，可以满足您的每一个需求，为住户提供适合各种场合的空间。

国浩的资源高效型和社区主导型项目设计方案通过鼓励年轻家庭和工作人士的共同发展，塑造了城市生活的未来。名汇庭苑带您拥抱更

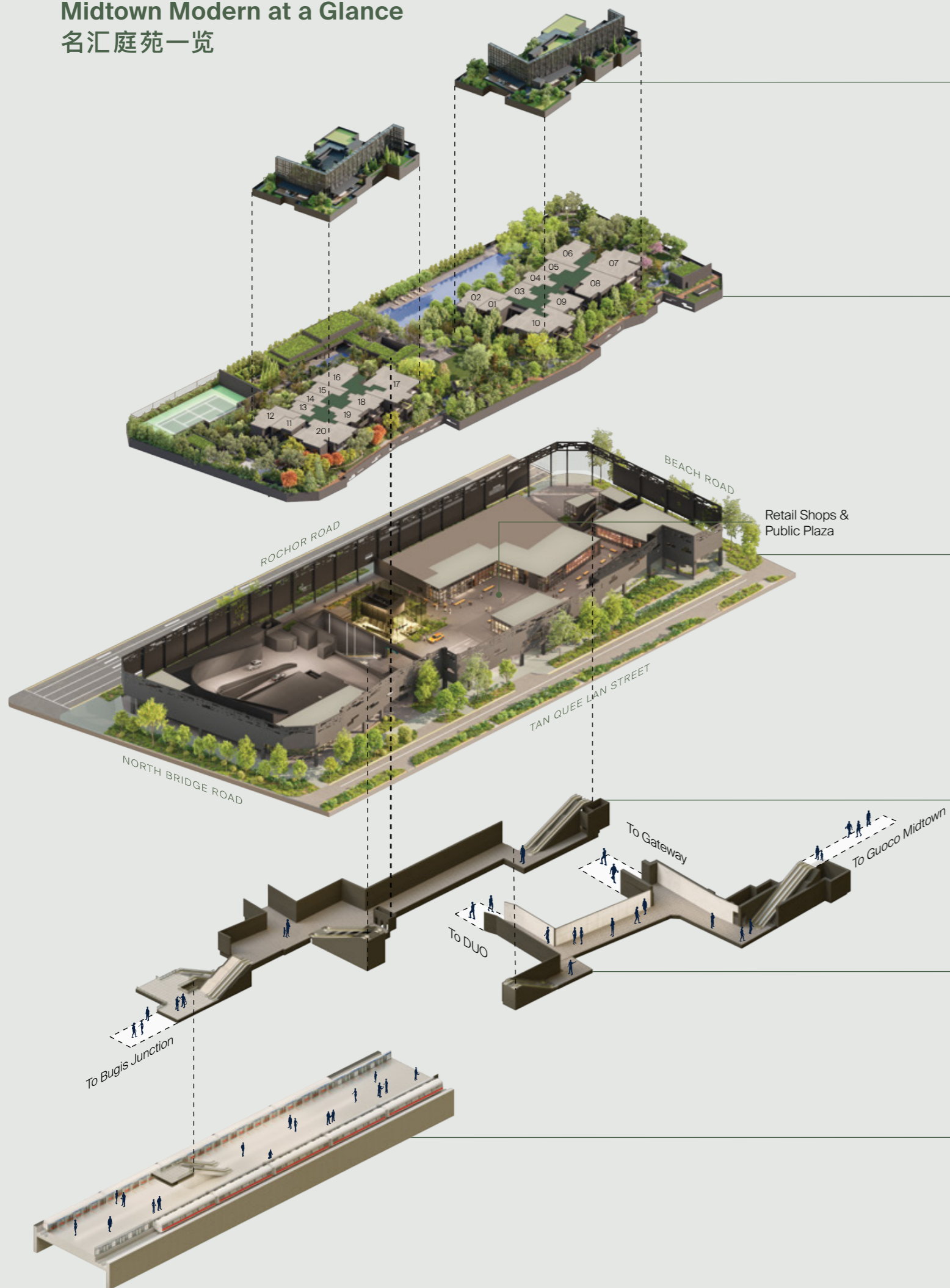
具可持续性的生活方式，共同铸就美好的明天。在这个生态环境瞬息万变的时代，一个未来主义的家园旨在为我们的后代保留更多的自然资源。从能源到水和废物排放，从绿色植物到照明和冷却系统，名汇庭苑的创新节能手段优化了整个住宅生态系统，让我们拥有更绿色的未来。

名汇庭苑的姊妹项目滨海名汇和国浩时代城均获得了新加坡建设局 (BCA) 颁发的“绿色建筑标志白金奖”，国浩集团作为可持续发展的专家，致力于为住户打造了生态友好型的家园。

当您进入国浩时代城时，四通八达的地下行人网络和带遮雨棚的地面人行道能让您更方便地去到城市的每一个角落。在这里，汽车不再是人们出行的必需品。步行，以及便利的地铁交通网络能让您为城市的绿色发展贡献一份力量。

这便是未来之城 - 名汇庭苑，谱写人、城市、自然的永恒赞歌。

Midtown Modern at a Glance
名汇庭苑一览



L30
ABOVE
30楼之上

Roof Gardens
屋顶岩石花园

Karstic Peak Gardens on both towers offer breathtaking panoramic views of the city.

Four pavilions equipped with kitchen facilities for different styles of cooking make this an ideal place for entertainment.

在此欣赏令人惊叹的城市全景

L3
3楼

Gardens in the Woods
花园露台

Enjoy a full suite of residential facilities amidst eight different garden landscapes, starting from the signature GuocoLand Grand Lawn to the Autumn Wood.

城市中心的自然胜地，拥有8个不同主题的花园，四季常青、美不胜收。辅以各类休闲、社交设施，私享纯粹生活

L1

Arrival Lounge, Arrival Plaza and Retail
住客大堂、迎宾广场和零售商场

An impressive arrival lounge welcomes you back home. The hotel-like lounge can serve as a space for work or meetings with business associates.

Located next to it are trendy restaurants, retail shops and public plazas.

犹如豪华酒店般的大堂，既可工作、亦可会友。大堂之外即是零售商场和社区空间。

B1

Underground Pedestrian Network
地下人行道网络

Make your way to other developments in the vicinity with ease and safe from the elements through the integrated underground pedestrian network.

可通往国浩时代城、双景坊和新门广场

B2

MRT MRT B3

Direct Access to Bugis MRT Interchange
无缝连接武吉土地铁转换站

The East-West Line (EWL) and Downtown Line (DTL) provide seamless connection to attractions, prestigious schools and job centres.

东西向线(EWL)和滨海市区线(DTL)

通过两条地铁线可快速抵达滨海湾、中央商务区、武吉知马沿线各个名校和樟宜机场等

Prime Location 黄金区位

GUOCO
MIDTOWN
国浩时代城

GUOCO MIDTOWN II
AND MIDTOWN MODERN
国浩时代城二期和名汇庭苑



Getting Around

步享城市精彩

 Direct Integration to Bugis Interchange MRT Station East-West & Downtown Line
无缝连接：武吉士地铁换乘站东西向线(EWL)和滨海市区线(DTL)

 Walking Distance to North-South & Circle Line MRT Stations
步行即可到达：
南北向线(NSL)和环线(CL)地铁站

 Walking Distance To Shopping Malls & Offices
步行可抵的商场和写字楼

Guoco Midtown
国浩时代城
DUO
双景坊
Bugis Junction
白沙浮广场
South Beach
风华南岸府
Suntec City
新达城购物中心
Raffles City
莱佛士城
Marina Square
滨海广场

 Within 5-10 min Drive To Other Key Districts
开车5-10分钟可到达的其他主要区域

Raffles Place
莱佛士广场
Tanjong Pagar
丹戎巴葛
Marina Bay
滨海湾
Orchard Road
乌节路

 4 Major Expressways
4条主要高速公路

East Coast Parkway
东海岸公园大道
Marina Coastal Expressway
滨海高速公路
Kallang-Paya Lebar Expressway
加冷-巴耶利峇高速公路
North-South Corridor (Upcoming)
南北高速公路 (即将开通)

 Established Schools along MRT Lines
地铁沿线学校

Anglo-Chinese School (Barker Road)
英华中学巴克路校区
Singapore Chinese Girls' School
新加坡女子学校
National Junior College
国家初级学院
St Joseph's Institution
圣若瑟夫国际学院
Hwa Chong Institution
新加坡华侨中学
and more
更多

 Places of Interest
名胜古迹

National Museum
国家博物馆
National Gallery Singapore
新加坡国家美术馆
National Library
国家图书馆
Kampong Glam
甘榜格南

 14-min Drive To Changi Airport
14分钟车程到樟宜机场

Via East Coast Parkway (ECP)
通过东海岸公园大道

For Illustrative Purposes Only
仅供参考说明





Well-placed at the intersection of the City Hall, Marina Centre and Bugis districts, Guoco Midtown offers an exciting array of alfresco dining options, shopping conveniences and daily amenities that are augmented by the vibrancy of its greater neighbourhood.

The public plazas of Midtown Common, Midtown Market and Midtown Square present unrivalled convenience at the doorstep of Midtown Modern with their curated selection of retail and F&B experiences. From bustling market bazaars to memorable festivals, residents of all ages are bound to be energised by the hive of activities that this new civic heart of the city will play host to.

Beyond the lively street level of the Guoco Midtown district, residents can also take full advantage of the increased walkability that this development brings to the wider neighbourhood. From Bugis Junction to Marina Square and even the National Gallery Singapore, the extensive underground and overhead pedestrian networks create seamless connectivity that residents can enjoy on their daily commutes and weekend city explorations.

Where one seeks an evening of cultural entertainment, world-class institutions like Esplanade - Theatres on the Bay are a mere walk away. Shopping malls and dining destinations provide rich variety in the vicinity, catering to the lifestyle needs of the trendy urbanite. From local eateries in shophouses to avant-garde art galleries, this multi-faceted neighbourhood is a treasure trove of gems awaiting to be discovered.

The cultural enclave of Kampong Glam, with its exotic culinary selection and independent local boutiques, lays around the corner. A short hop away via the Downtown Line, colourful local markets of Chinatown and Little India teem with lively sights, sounds, tastes and smells.

Complementing the immense walkability of the district is an extensive public transportation network that connects residents to the Central Business District and other parts of Singapore. Midtown Modern not only sits upon Bugis MRT interchange – it is also within walking distance to three other MRT stations, making cars an option that sustainability-minded residents need not rely on.

国浩时代城位于市政厅、滨海湾和武吉士三区交界处，为您提供一系列的餐饮选择。这里拥有便利的购物和日常设施，让您尽享城市精彩生活。

国浩时代城内的零售商场和公共广场为名汇庭苑的住户提供了无与伦比的便利生活，一出门便可拥有多种零售和餐饮选择。无论是想要体验繁华的周末集市，还是城市活动时热闹的氛围，每个住户都会在这里感受到满满的活力。

除此之外，国浩时代城优越的地理位置也是无可比拟的。从白沙浮广场到滨海广场，甚至是新加坡国家美术馆，无缝连接的地下和地上交通网络为住户的日常通勤和周末出行带来了极大的便利。

如果您热爱艺术文化，滨海艺术中心这般世界一流的艺术场所距离国

浩时代城仅几步之遥。而附近的购物中心和新潮餐厅已成为城市新贵流连之地。从店屋里的当地美食到前卫的艺术画廊，国浩时代城这个丰富的社区如同一个正在被发掘的珍贵宝库。

国浩时代城附近还拥有文化宝地甘榜格南，在这里可以找到各类异国风味的美食和当地的精品店。此外，数站地铁之遥便是牛车水和小印度五颜六色的特色市场，映入眼帘的是热闹非凡的景象，以及独具特色的声音和味道。

名汇庭苑所连接的广泛的公共交通网络可以使住户轻松地到达中央商务区和新加坡其它地区。它不仅位于武吉士地铁转换站，而且距其他三个地铁站也只有几步之遥。在这里，无车之城不再是一个梦想。

Super Connectivity
四通八达

Standing majestically above the Bugis MRT Interchange, Midtown Modern offers direct access to the Downtown and East-West Lines, as well as seamless connection to malls and offices via an extensive and integrated underground pedestrian network.

名汇庭苑与武吉士地铁转换站直接相连。此外，通过广泛的地上和地下行人通道，也可方便通往周边的各个主要写字楼和购物商场。



To Guoco Midtown
通往国浩时代城

To Gateway
通往新门广场

To DUO
通往双景坊

Bugis Interchange MRT Station
East-West & Downtown Line
武吉士地铁转换站/东西向线(EWL)和市区线(DTL)

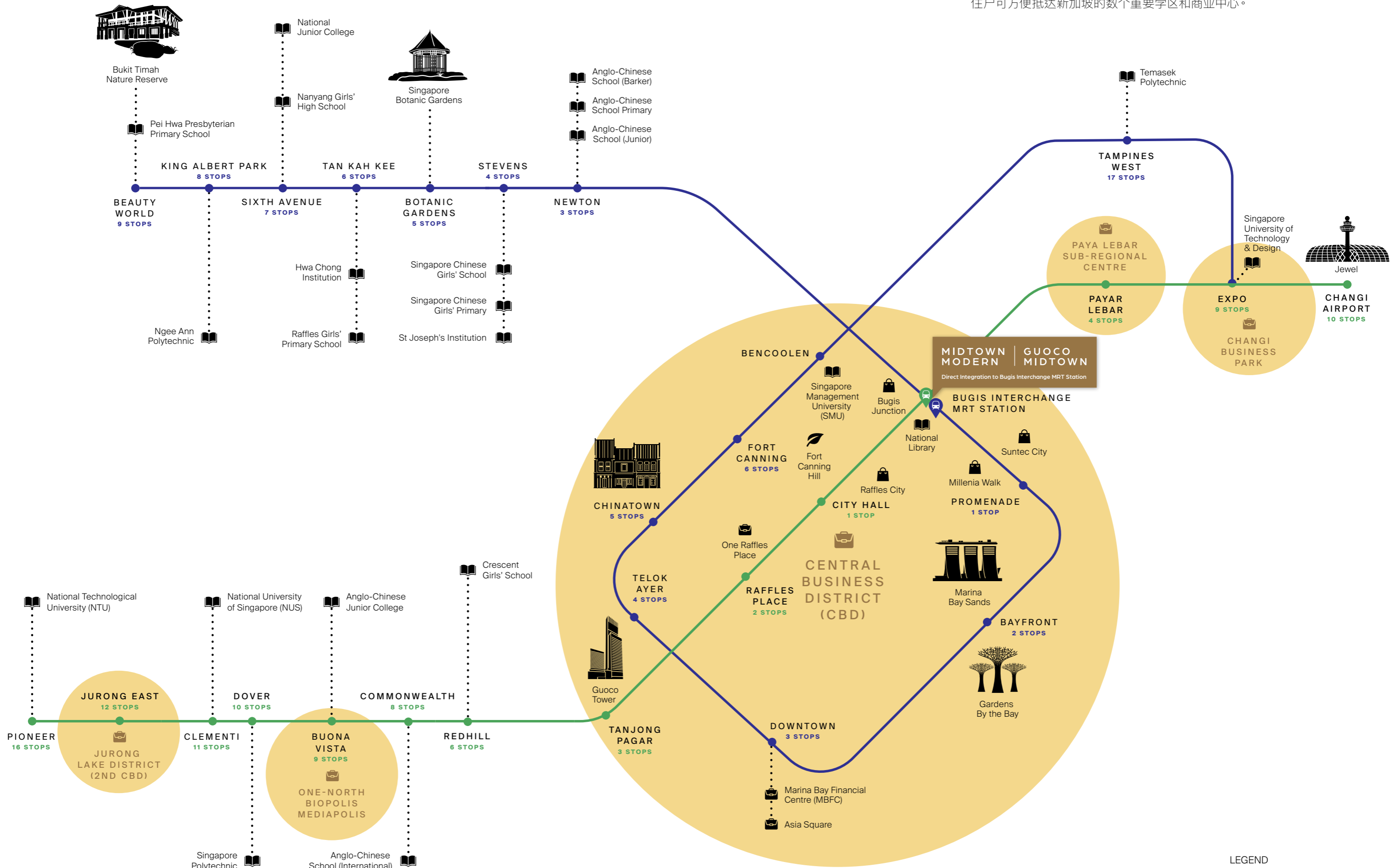
To Midtown Modern
通往名汇庭苑

To Bugis Junction
通往白沙浮广场

Well-connected 绝佳的连通性

Sitting atop the Bugis MRT interchange, Midtown Modern grants residents convenient access to the renowned education belt and business centres along the East-West and Downtown Lines.

名汇庭苑与武吉士地铁换乘站直接相连，通过地铁东西线和滨海市区线，住户可方便抵达新加坡的数个重要学区和商业中心。



For Illustrative Purposes Only
仅供参考说明

LEGEND
图例

- MRT STATION 地铁站
- JOB CENTRE 商业中心

The Residences

名汇庭苑

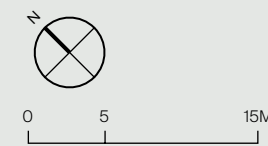
Welcome home to Midtown Modern. Within the warm brick tones of the twin residential towers, nestled in greenery and curated with resort-style facilities, 558 luxury garden homes are meticulously crafted for family living, with sustainability and flexibility in mind. Make your selection from a wide range of unit types and layouts, all generous, practical and extremely liveable.

欢迎来到名汇庭苑。在混凝土和棕色砖石构建的两栋住宅大楼之间，度假胜地般的休闲设施与郁郁葱葱的园林互相交织，打造了一个城市中的温暖家园。558间花园豪宅，精心设计的生活空间，兼顾灵活性和可持续性的生活方式。现在就来挑选你的心仪家园！



Site Plan 平面图

Level 3 | 3楼



Artist's Impression
艺术渲染图

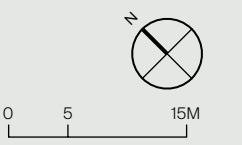
Level 3 | 3楼

- | | | | | | |
|----------------------------|-------------------------|---------------------------|---------------------------------|---------------------------|------------------------------|
| 1 - Library
图书馆 | 6 - Forest Walk
森林小径 | 11 - Hot Spring
温泉 | 16 - Sun Deck
日光浴甲板 | 20 - The Gym
健身房 | 25 - Play Pavilion
运动亭 |
| 2 - Garden Lounge
花园休憩台 | 7 - Summer Swale
夏溪 | 12 - Jacuzzi
按摩池 | 17 - 50m Lap Pool
50米泳池 | 21 - Leisure Pool
休闲泳池 | 26 - Adventure Play
儿童游乐场 |
| 3 - Water Garden
水庭园 | 8 - Spring Creek
泉溪 | 13 - Estuary Pool
河湾池 | 18 - Courtyard
仲夏花园 | 22 - Rain Garden
雨林花园 | 27 - Autumn Creek
秋溪 |
| 4 - Lawn Pavilion
草坪亭 | 9 - Tea House
茶苑 | 14 - Aqua Barre
泳池健身房 | 19 - Clubhouse
俱乐部会所 | 23 - Pet Corner
宠物角 | |
| 5 - Grand Lawn
大草坪 | 10 - Lily Pond
莲花池 | 15 - Pool Terrace
泳池露台 | Club Dining 1, 2 & 3
会所1,2和3 | 24 - Tennis Court
网球场 | |

North Tower | 北楼
Roof Gardens | 屋顶花园



South Tower | 南楼
Roof Gardens | 屋顶花园



Level 1 | 1楼



Level 1 | 1楼

- | | |
|----------------------------|---------------------------|
| 28 - North Garden
北花园 | 32 - East Plaza
东广场 |
| 29 - Arrival Plaza
迎宾广场 | 33 - City Room
城市空间 |
| 30 - South Garden
南花园 | 34 - Arrival Lounge
大堂 |
| 31 - South Plaza
南广场 | 35 - Bike Park
单车停放处 |

Roof Gardens | 屋顶花园

- | | |
|--|--|
| 36 - Peak View Pavilion
(North Tower)
峰景亭 (北楼) | 39 - Peak View Pavilion
(South Tower)
峰景亭 (南楼) |
| 37 - City View Pavilion
(North Tower)
城景亭 (北楼) | 40 - City View Pavilion
(South Tower)
城景亭 (南楼) |
| 38 - Karstic Peak Garden
喀斯特峰花园 | |



Unit Distribution

户型分布

NORTH TOWER 北楼											SOUTH TOWER 南楼									
UNIT FLOOR	11	12	13	14	15	16	17	18	19	20	1	2	3	4	5	6	7	8	9	10
30	A1-R	C1-R	A1-R	A2-R	A3-R	C2-R	PH 1 (PL)		B2-R	D2-R (PL)	A1-R	C1-R	B1-R	B2-R	A4-R	C2-R	PH 2 (PL)		B3-R	D3P-R (PL)
29	A1	C1	A1	A2	A3	C2	D3P (PL)	B3	B2	D2 (PL)	A1	C1	B1	B2	A4	C2	D1 (PL)	C3	B3	D3P (PL)
28	A1	C1	A1	A2	A3	C2	D3P (PL)	B3	B2	D2 (PL)	A1	C1	B1	B2	A4	C2	D1 (PL)	C3	B3	D3P (PL)
27	A1	C1	A1	A2	A3	C2	D3P (PL)	B3	B2	D2 (PL)	A1	C1	B1	B2	A4	C2	D1 (PL)	C3	B3	D3P (PL)
26	A1	C1	A1	A2	A3	C2	D3P (PL)	B3	B2	D2 (PL)	A1	C1	B1	B2	A4	C2	D1 (PL)	C3	B3	D3P (PL)
25	A1	C1	A1	A2	A3	C2	D3P (PL)	B3	B2	D2 (PL)	A1	C1	B1	B2	A4	C2	D1 (PL)	C3	B3	D3P (PL)
24	A1	C1	A1	A2	A3	C2	D3P (PL)	B3	B2	D2 (PL)	A1	C1	B1	B2	A4	C2	D1 (PL)	C3	B3	D3P (PL)
23	A1	C1	A1	A2	A3	C2	D3P (PL)	B3	B2	D2 (PL)	A1	C1	B1	B2	A4	C2	D1 (PL)	C3	B3	D3P (PL)
22	A1	C1	A1	A2	A3	C2	D3P (PL)	B3	B2	D2 (PL)	A1	C1	B1	B2	A4	C2	D1 (PL)	C3	B3	D3P (PL)
21	A1	C1	A1	A2	A3	C2	D3P (PL)	B3	B2	D2 (PL)	A1	C1	B1	B2	A4	C2	D1 (PL)	C3	B3	D3P (PL)
20	A1	C1	A1	A2	A3	C2	D3P (PL)	B3	B2	D2 (PL)	A1	C1	B1	B2	A4	C2	D1 (PL)	C3	B3	D3P (PL)
19	A1	C1	A1	A2	A3	C2	D3P (PL)	B3	B2	D2 (PL)	A1	C1	B1	B2	A4	C2	D1 (PL)	C3	B3	D3P (PL)
18	A1	C1	A1	A2	A3	C2	D3P (PL)	B3	B2	D2 (PL)	A1	C1	B1	B2	A4	C2	D1 (PL)	C3	B3	D3P (PL)
17	A1	C1	A1	A2	A3	C2	D3P (PL)	B3	B2	D2 (PL)	A1	C1	B1	B2	A4	C2	D1 (PL)	C3	B3	D3P (PL)
16	A1	C1	A1	A2	A3	C2	D3P (PL)	B3	B2	D2 (PL)	A1	C1	B1	B2	A4	C2	D1 (PL)	C3	B3	D3P (PL)
15	A1	C1	A1	A2	A3	C2	D3P (PL)	B3	B2	D2 (PL)	A1	C1	B1	B2	A4	C2	D1 (PL)	C3	B3	D3P (PL)
14	A1	C1	A1	A2	A3	C2	D3P (PL)	B3	B2	D2 (PL)	A1	C1	B1	B2	A4	C2	D1 (PL)	C3	B3	D3P (PL)
13	A1	C1	A1	A2	A3	C2	D3P (PL)	B3	B2	D2 (PL)	A1	C1	B1	B2	A4	C2	D1 (PL)	C3	B3	D3P (PL)
12	A1	C1	A1	A2	A3	C2	D3P (PL)	B3	B2	D2 (PL)	A1	C1	B1	B2	A4	C2	D1 (PL)	C3	B3	D3P (PL)
11	A1	C1	A1	A2	A3	C2	D3P (PL)	B3	B2	D2 (PL)	A1	C1	B1	B2	A4	C2	D1 (PL)	C3	B3	D3P (PL)
10	A1	C1	A1	A2	A3	C2	D3P (PL)	B3	B2	D2 (PL)	A1	C1	B1	B2	A4	C2	D1 (PL)	C3	B3	D3P (PL)
9	A1	C1	A1	A2	A3	C2	D3P (PL)	B3	B2	D2 (PL)	A1	C1	B1	B2	A4	C2	D1 (PL)	C3	B3	D3P (PL)
8	A1	C1	A1	A2	A3	C2	D3P (PL)	B3	B2	D2 (PL)	A1	C1	B1	B2	A4	C2	D1 (PL)	C3	B3	D3P (PL)
7	A1	C1	A1	A2	A3	C2	D3P (PL)	B3	B2	D2 (PL)	A1	C1	B1	B2	A4	C2	D1 (PL)	C3	B3	D3P (PL)
6	A1	C1	A1	A2	A3	C2	D3P (PL)	B3	B2	D2 (PL)	A1	C1	B1	B2	A4	C2	D1 (PL)	C3	B3	D3P (PL)
5	A1	C1	A1	A2	A3	C2	D3P (PL)	B3	B2	D2 (PL)	A1	C1	B1	B2	A4	C2	D1 (PL)	C3	B3	D3P (PL)
4	A1	C1	A1	A2	A3	C2	D3P (PL)	B3	B2	D2 (PL)	A1	C1	B1	B2	A4	C2	D1 (PL)	C3	B3	D3P (PL)
3	A1	C1	A1	A2-G	A3-G	C2-G	D3P-G (PL)	B3-G	B2-G	D2-G (PL)	A1	C1	B1	B2-G	A4-G	C2-G	D1-G (PL)	C3-G	B3-G	D3P-G (PL)
2	CAR PARK 停车库																			
1	PODIUM/RESTAURANTS 零售底层																			

1 Bedroom | 1卧室

- Type A1
- Type A2
- Type A3
- Type A4

2 Bedroom | 2卧室

- Type B1
- Type B2
- Type B3

3 Bedroom | 3卧室

- Type C1
- Type C2
- Type C3

4 Bedroom & 4 Bedroom Premium | 4卧室

- Type D1 (PL)
- Type D2 (PL)
- Type D3P (PL)

Penthouse | 顶层豪宅

- PH 1 (PL)
- PH 2 (PL)

1-BEDROOM 1卧室

Type A1

38 sq m | 409 sq ft
INCLUSIVE OF 3 SQM AC LEDGE

Tower 16
UNIT
#03-01 TO #29-01

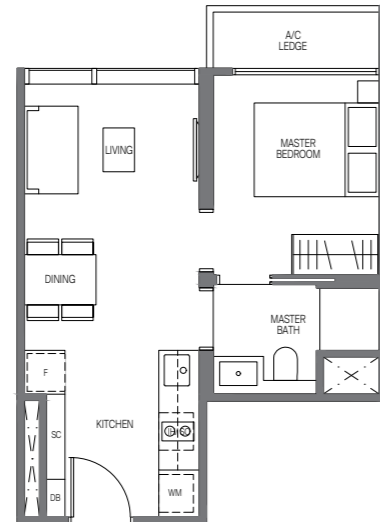
Tower 18
UNIT
#03-11 TO #29-11
#03-13 TO #29-13

Type A1-R

38 sq m | 409 sq ft
INCLUSIVE OF 3 SQM AC LEDGE

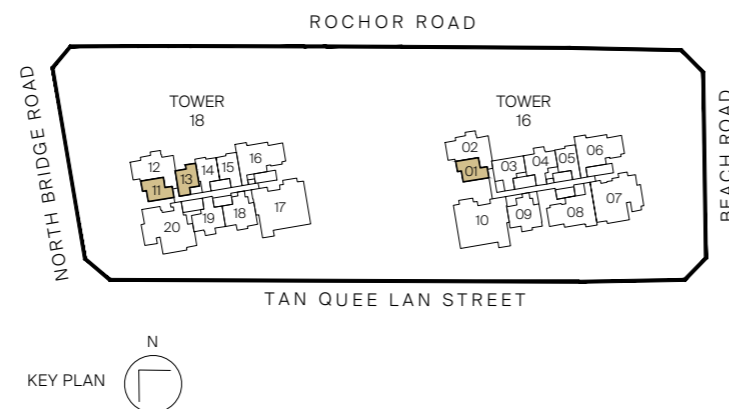
Tower 16
UNIT
#30-01

Tower 18
UNIT
#30-11
#30-13



Legend (where applicable)

- | | |
|-------------------------------|--------------------------------|
| F - Fridge | WCH - Wine Chiller |
| IH - Induction Hob | W - Washer |
| GH - Gas Hob | D - Dryer |
| WM - Washer cum Dryer | DB - Distribution Board |
| SO - Combi Steam Oven | SC - Shoe Cabinet |
| CO - Convectional Oven | |



All plans are subjected to amendments as may be approved by the relevant authorities. Floor areas are approximate measurements and are subjected to final survey.

1-BEDROOM 1卧室

Type A2

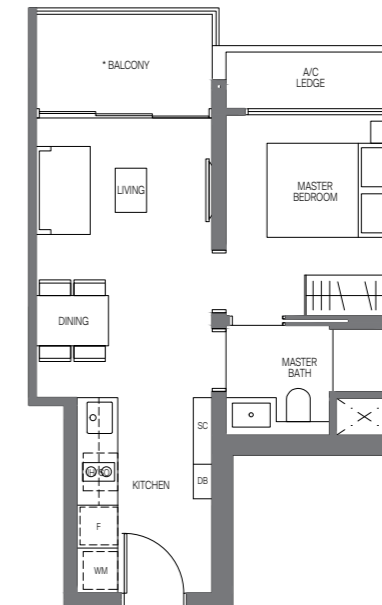
44 sq m | 474 sq ft
INCLUSIVE OF 5 SQM BALCONY & 3 SQM AC LEDGE

Tower 18
UNIT
#04-14 to #29-14

Type A2-R

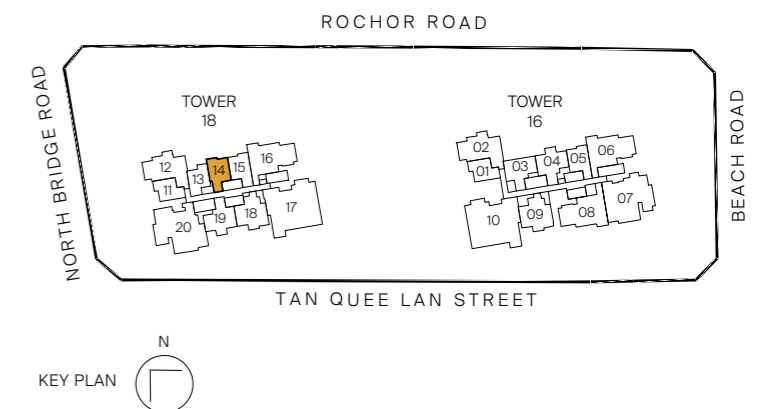
44 sq m | 474 sq ft
INCLUSIVE OF 5 SQM BALCONY & 3 SQM AC LEDGE

Tower 18
UNIT
#30-14



Legend (where applicable)

- | | |
|-------------------------------|--------------------------------|
| F - Fridge | WCH - Wine Chiller |
| IH - Induction Hob | W - Washer |
| GH - Gas Hob | D - Dryer |
| WM - Washer cum Dryer | DB - Distribution Board |
| SO - Combi Steam Oven | SC - Shoe Cabinet |
| CO - Convectional Oven | |



All plans are subjected to amendments as may be approved by the relevant authorities. Floor areas are approximate measurements and are subjected to final survey.

* Balconies/PES are not to be enclosed except with a balcony screen which has been approved and complies with the Competent Authority's guidelines. For an illustration of the approved balcony screen, please refer to this brochure

1-BEDROOM 1 卧室

Type A3

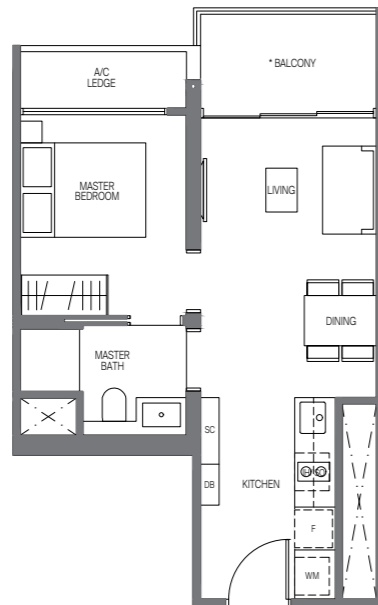
44 sq m | 474 sq ft
INCLUSIVE OF 5 SQM BALCONY & 3 SQM AC LEDGE

Tower 18
UNIT
#04-15 to #29-15

Type A3-R

44 sq m | 474 sq ft
INCLUSIVE OF 5 SQM BALCONY & 3 SQM AC LEDGE

Tower 18
UNIT
#30-15



2-BEDROOM 2 卧室

Type B2

59 sq m | 635 sq ft
INCLUSIVE OF 5 SQM BALCONY & 3 SQM AC LEDGE

Tower 16
UNIT
#04-04 to #29-04

Type B2-R

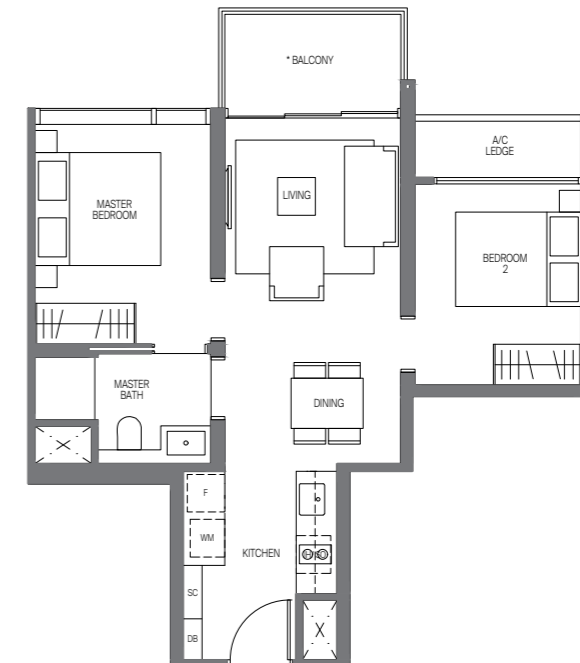
59 sq m | 635 sq ft
INCLUSIVE OF 5 SQM BALCONY & 3 SQM AC LEDGE

Type B2-R

59 sq m | 635 sq ft
INCLUSIVE OF 5 SQM BALCONY & 3 SQM AC LEDGE

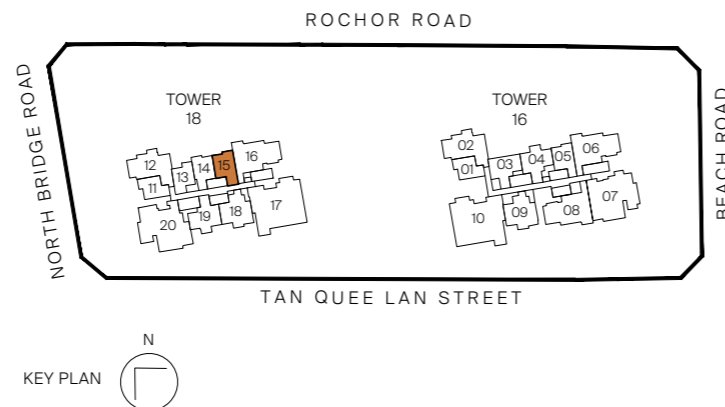
Tower 16
UNIT
#30-04

Tower 18
UNIT
#30-19



Legend (where applicable)

- | | |
|-------------------------------|--------------------------------|
| F - Fridge | WCH - Wine Chiller |
| IH - Induction Hob | W - Washer |
| GH - Gas Hob | D - Dryer |
| WM - Washer cum Dryer | DB - Distribution Board |
| SO - Combi Steam Oven | SC - Shoe Cabinet |
| CO - Convectional Oven | |

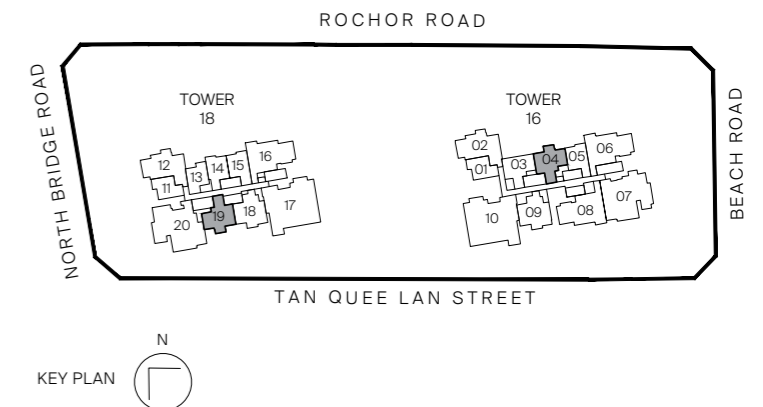


All plans are subjected to amendments as may be approved by the relevant authorities. Floor areas are approximate measurements and are subjected to final survey.
* Balconies/PES are not to be enclosed except with a balcony screen which has been approved and complies with the Competent Authority's guidelines.
For an illustration of the approved balcony screen, please refer to this brochure



Legend (where applicable)

- | | |
|-------------------------------|--------------------------------|
| F - Fridge | WCH - Wine Chiller |
| IH - Induction Hob | W - Washer |
| GH - Gas Hob | D - Dryer |
| WM - Washer cum Dryer | DB - Distribution Board |
| SO - Combi Steam Oven | SC - Shoe Cabinet |
| CO - Convectional Oven | |



All plans are subjected to amendments as may be approved by the relevant authorities. Floor areas are approximate measurements and are subjected to final survey.
* Balconies/PES are not to be enclosed except with a balcony screen which has been approved and complies with the Competent Authority's guidelines.
For an illustration of the approved balcony screen, please refer to this brochure



Artist's Impression
艺术渲染图

3-BEDROOM 3 卧室

Type C1

84 sq m | 904 sq ft
INCLUSIVE OF 7 SQM AC LEDGE

Tower 16
UNIT
#03-02 to #29-02

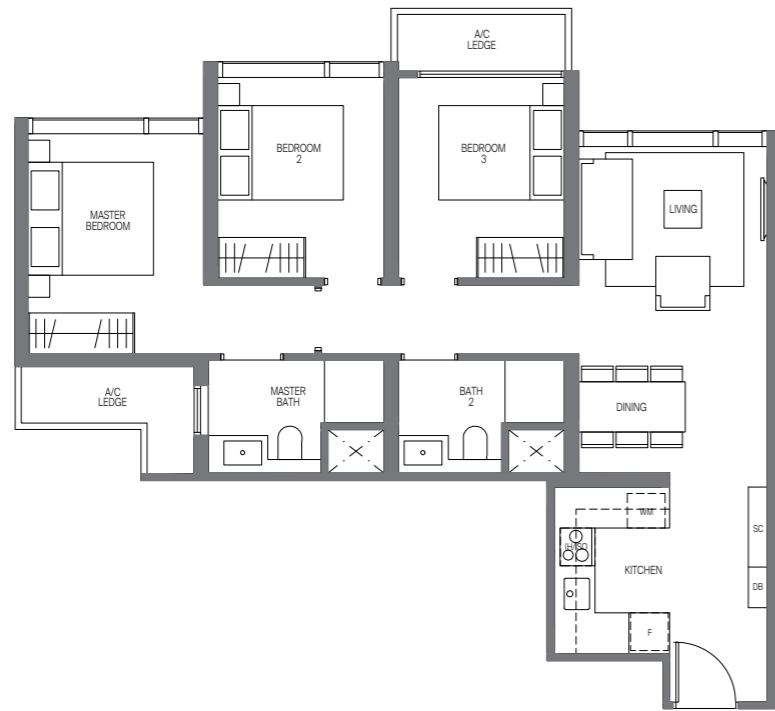
Tower 18
UNIT
#03-12 to #29-12

Type C1-R

84 sq m | 904 sq ft
INCLUSIVE OF 7 SQM AC LEDGE

Tower 16
UNIT
#30-02

Tower 18
UNIT
#30-12



3-BEDROOM 3 卧室

Type C2

99 sq m | 1066 sq ft
INCLUSIVE OF 6 SQM BALCONY & 5 SQM AC LEDGE

Tower 16
UNIT
#04-06 to #29-06

Tower 18
UNIT
#04-16 to #29-16

Type C2-R

99 sq m | 1066 sq ft
INCLUSIVE OF 6 SQM BALCONY & 5 SQM AC LEDGE

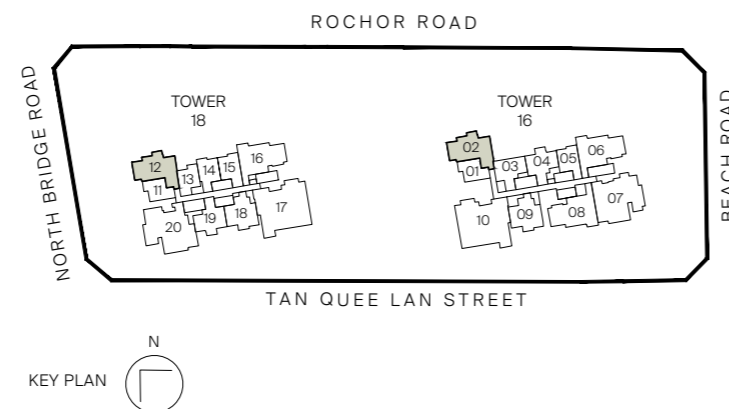
Tower 16
UNIT
#30-06

Tower 18
UNIT
#30-16



Legend (where applicable)

- F** - Fridge
- IH** - Induction Hob
- GH** - Gas Hob
- WM** - Washer cum Dryer
- SO** - Combi Steam Oven
- CO** - Convectional Oven
- WCH** - Wine Chiller
- W** - Washer
- D** - Dryer
- DB** - Distribution Board
- SC** - Shoe Cabinet

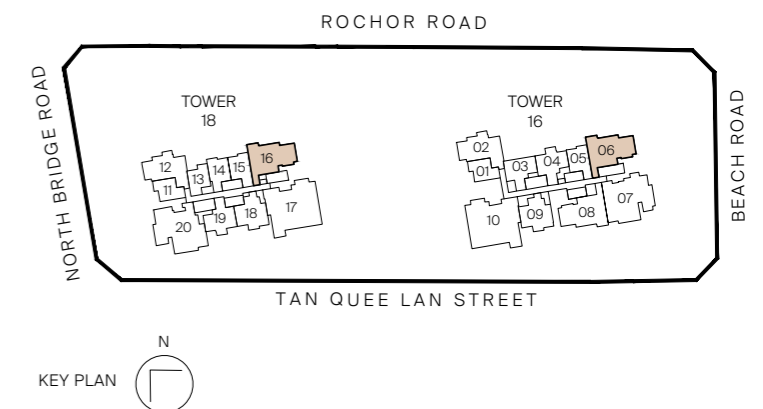


All plans are subjected to amendments as may be approved by the relevant authorities. Floor areas are approximate measurements and are subjected to final survey.



Legend (where applicable)

- F** - Fridge
- IH** - Induction Hob
- GH** - Gas Hob
- WM** - Washer cum Dryer
- SO** - Combi Steam Oven
- CO** - Convectional Oven
- WCH** - Wine Chiller
- W** - Washer
- D** - Dryer
- DB** - Distribution Board
- SC** - Shoe Cabinet



All plans are subjected to amendments as may be approved by the relevant authorities. Floor areas are approximate measurements and are subjected to final survey.

* Balconies/PES are not to be enclosed except with a balcony screen which has been approved and complies with the Competent Authority's guidelines. For an illustration of the approved balcony screen, please refer to this brochure

4 BEDROOM | 4 卧室



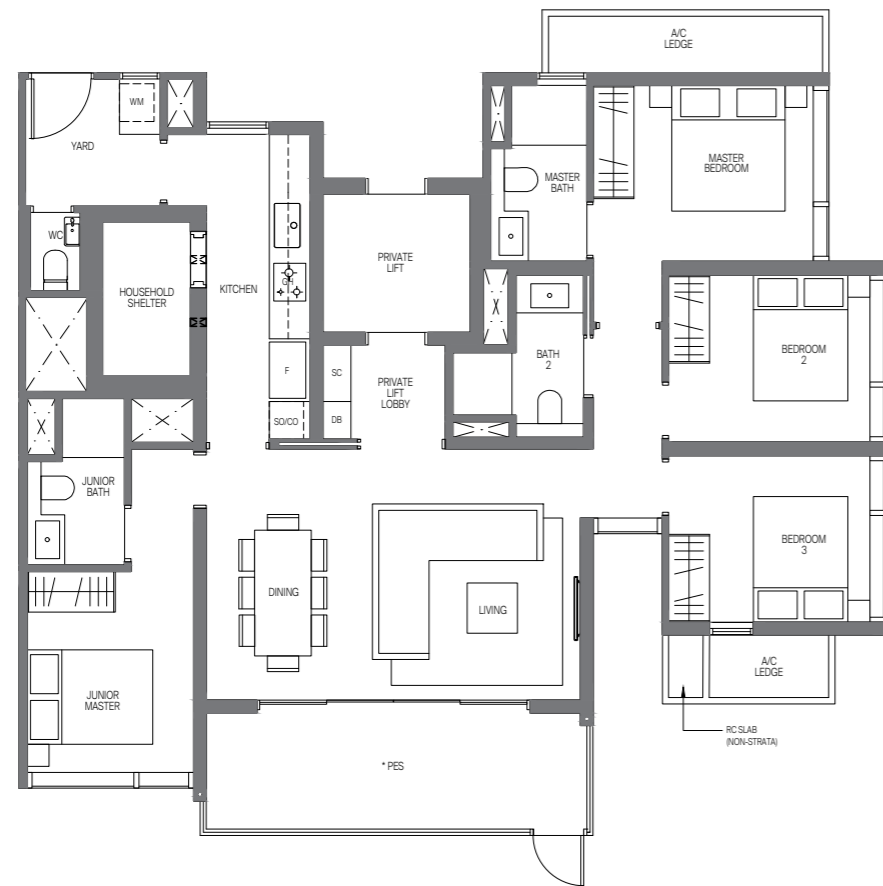
Artist's Impression
艺术渲染图

4-BEDROOM 4 卧室

Type D1-G (PL)

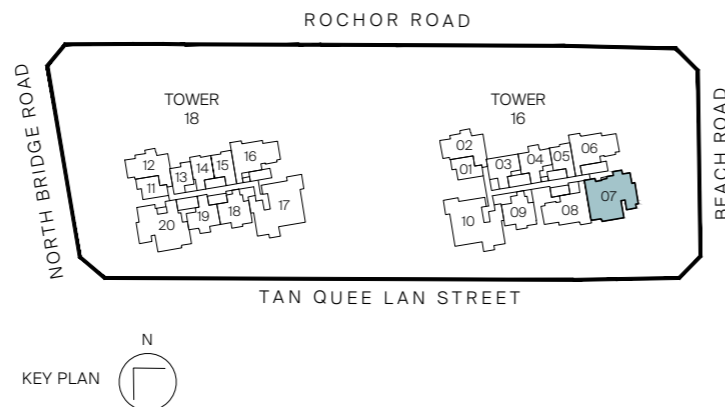
133 sq m | 1432 sq ft
INCLUSIVE OF 13 SQM PES & 7 SQM AC LEDGE

Tower 16
UNIT
#03-07



Legend (where applicable)

- | | |
|-------------------------------|--------------------------------|
| F - Fridge | WCH - Wine Chiller |
| IH - Induction Hob | W - Washer |
| GH - Gas Hob | D - Dryer |
| WM - Washer cum Dryer | DB - Distribution Board |
| SO - Steam Oven | SC - Shoe Cabinet |
| CO - Convectional Oven | |

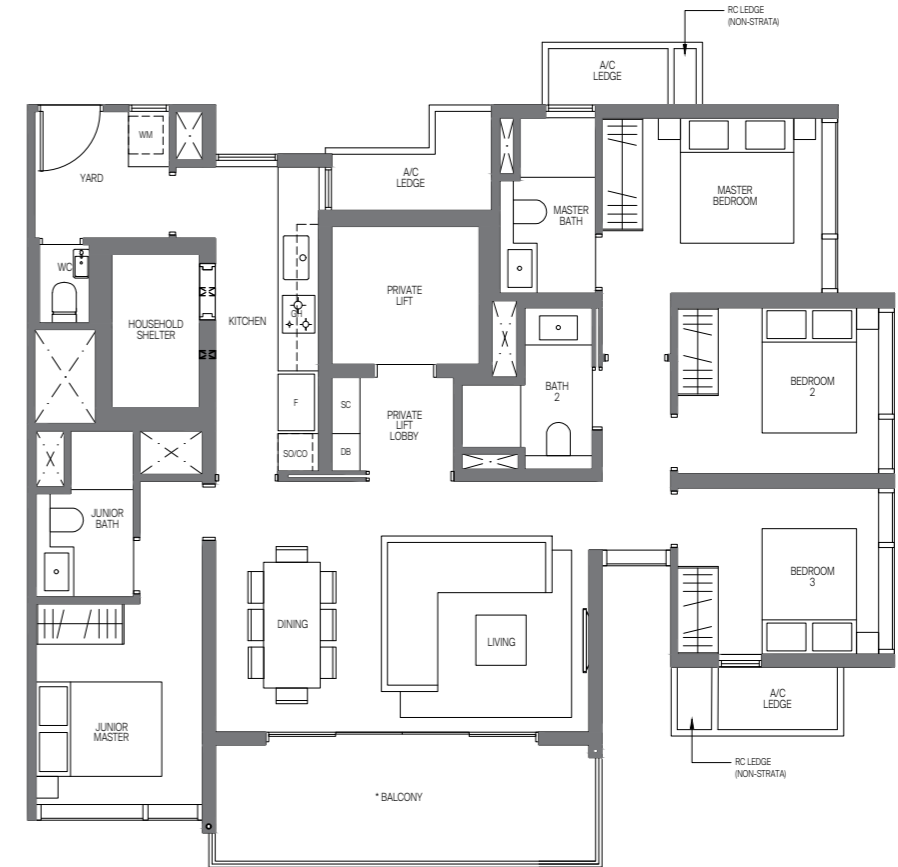


4-BEDROOM 4 卧室

Type D1 (PL)

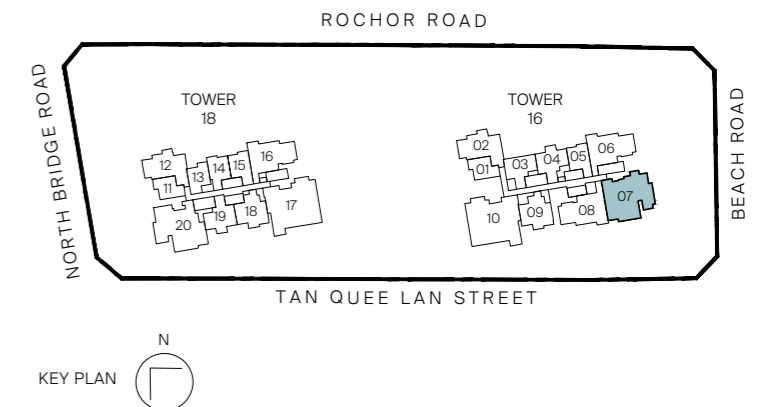
134 sq m | 1442 sq ft
INCLUSIVE OF 13 SQM BALCONY & 8 SQM AC LEDGE

Tower 16
UNIT
#04-07 to #29-07



Legend (where applicable)

- | | |
|-------------------------------|--------------------------------|
| F - Fridge | WCH - Wine Chiller |
| IH - Induction Hob | W - Washer |
| GH - Gas Hob | D - Dryer |
| WM - Washer cum Dryer | DB - Distribution Board |
| SO - Steam Oven | SC - Shoe Cabinet |
| CO - Convectional Oven | |



All plans are subjected to amendments as may be approved by the relevant authorities. Floor areas are approximate measurements and are subjected to final survey.

* Balconies/PES are not to be enclosed except with a balcony screen which has been approved and complies with the Competent Authority's guidelines. For an illustration of the approved balcony screen, please refer to this brochure

All plans are subjected to amendments as may be approved by the relevant authorities. Floor areas are approximate measurements and are subjected to final survey.

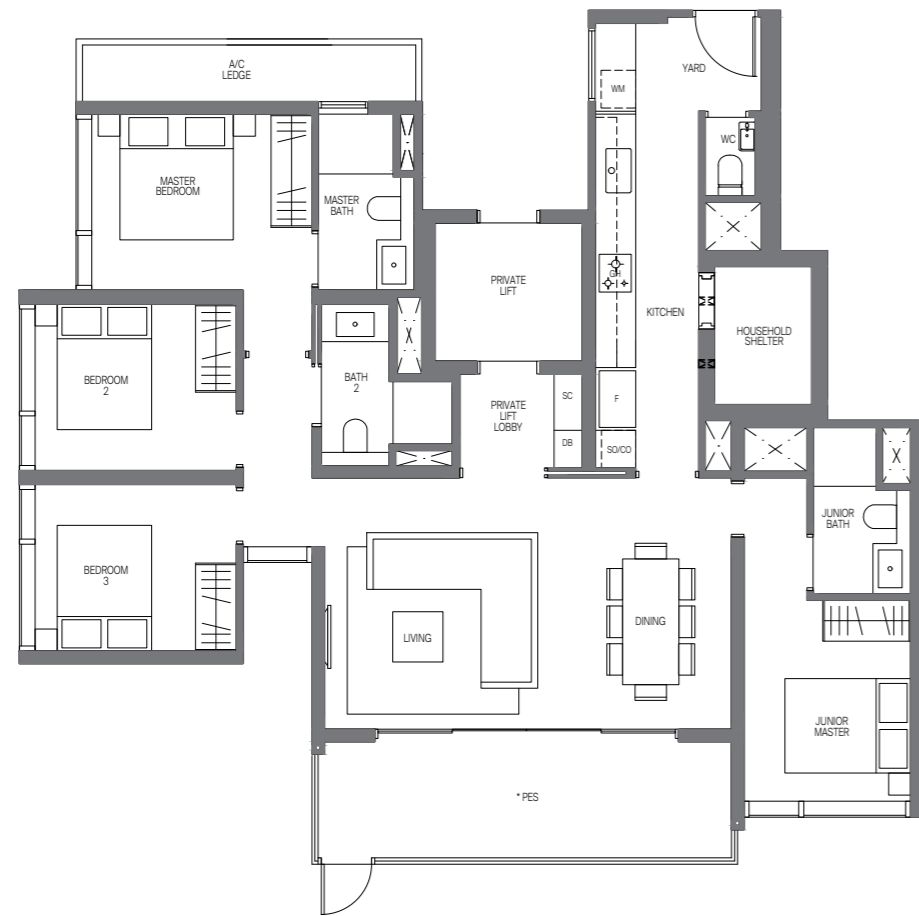
* Balconies/PES are not to be enclosed except with a balcony screen which has been approved and complies with the Competent Authority's guidelines. For an illustration of the approved balcony screen, please refer to this brochure

4-BEDROOM 4 卧室

Type D2-G (PL)

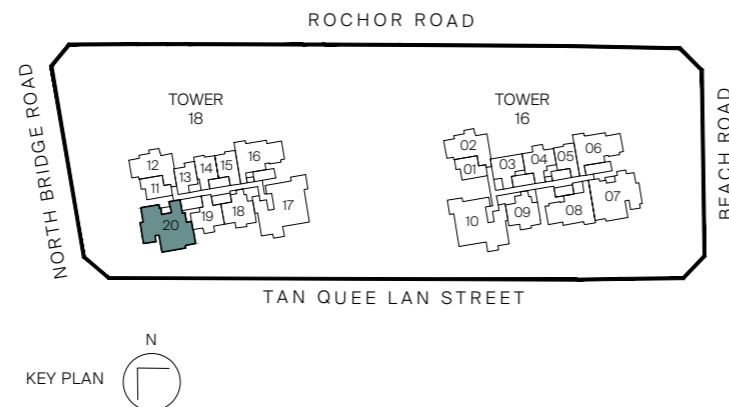
134 sq m | 1442 sq ft
INCLUSIVE OF 14 SQM PES & 6 SQM AC LEDGE

Tower 18
UNIT
#03-20



Legend (where applicable)

- | | |
|-------------------------------|--------------------------------|
| F - Fridge | WCH - Wine Chiller |
| IH - Induction Hob | W - Washer |
| GH - Gas Hob | D - Dryer |
| WM - Washer cum Dryer | DB - Distribution Board |
| SO - Steam Oven | SC - Shoe Cabinet |
| CO - Convectional Oven | |



All plans are subjected to amendments as may be approved by the relevant authorities. Floor areas are approximate measurements and are subjected to final survey.
* Balconies/PES are not to be enclosed except with a balcony screen which has been approved and complies with the Competent Authority's guidelines.
For an illustration of the approved balcony screen, please refer to this brochure

4-BEDROOM 4 卧室

Type D2 (PL)

136 sq m | 1464 sq ft
INCLUSIVE OF 14 SQM BALCONY & 8 SQM AC LEDGE

Tower 18
UNIT
#04-20 to #29-20

Type D2-R (PL)

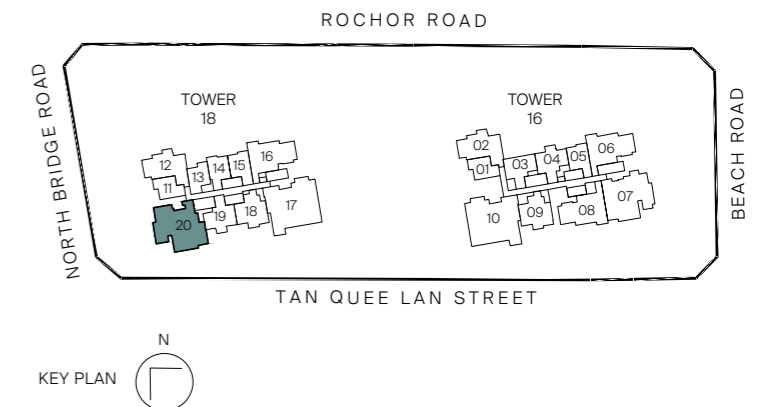
136 sq m | 1464 sq ft
INCLUSIVE OF 14 SQM BALCONY & 8 SQM AC LEDGE

Tower 18
UNIT
#30-20



Legend (where applicable)

- | | |
|-------------------------------|--------------------------------|
| F - Fridge | WCH - Wine Chiller |
| IH - Induction Hob | W - Washer |
| GH - Gas Hob | D - Dryer |
| WM - Washer cum Dryer | DB - Distribution Board |
| SO - Steam Oven | SC - Shoe Cabinet |
| CO - Convectional Oven | |



All plans are subjected to amendments as may be approved by the relevant authorities. Floor areas are approximate measurements and are subjected to final survey.
* Balconies/PES are not to be enclosed except with a balcony screen which has been approved and complies with the Competent Authority's guidelines.
For an illustration of the approved balcony screen, please refer to this brochure

4-BEDROOM PREMIUM 4 卧室

Type D3P-G (PL)

161 sq m | 1733 sq ft
INCLUSIVE OF 16 SQM PES & 7 SQM AC LEDGE

Tower 16
UNIT
#03-10*

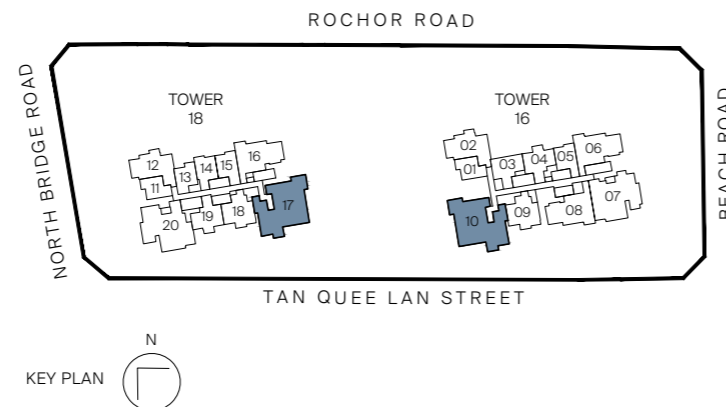
Tower 18
UNIT
#03-17

* MIRROR IMAGE



Legend (where applicable)

- | | |
|-------------------------------|--------------------------------|
| F - Fridge | WCH - Wine Chiller |
| IH - Induction Hob | W - Washer |
| GH - Gas Hob | D - Dryer |
| WM - Washer cum Dryer | DB - Distribution Board |
| SO - Steam Oven | SC - Shoe Cabinet |
| CO - Convectional Oven | |



All plans are subjected to amendments as may be approved by the relevant authorities. Floor areas are approximate measurements and are subjected to final survey.
* Balconies/PES are not to be enclosed except with a balcony screen which has been approved and complies with the Competent Authority's guidelines.
For an illustration of the approved balcony screen, please refer to this brochure

4-BEDROOM PREMIUM 4 卧室

Type D3P (PL)

168 sq m | 1808 sq ft
INCLUSIVE OF 16 SQM BALCONY & 8 SQM AC LEDGE

Tower 16
UNIT
#04-10* to #29-10*

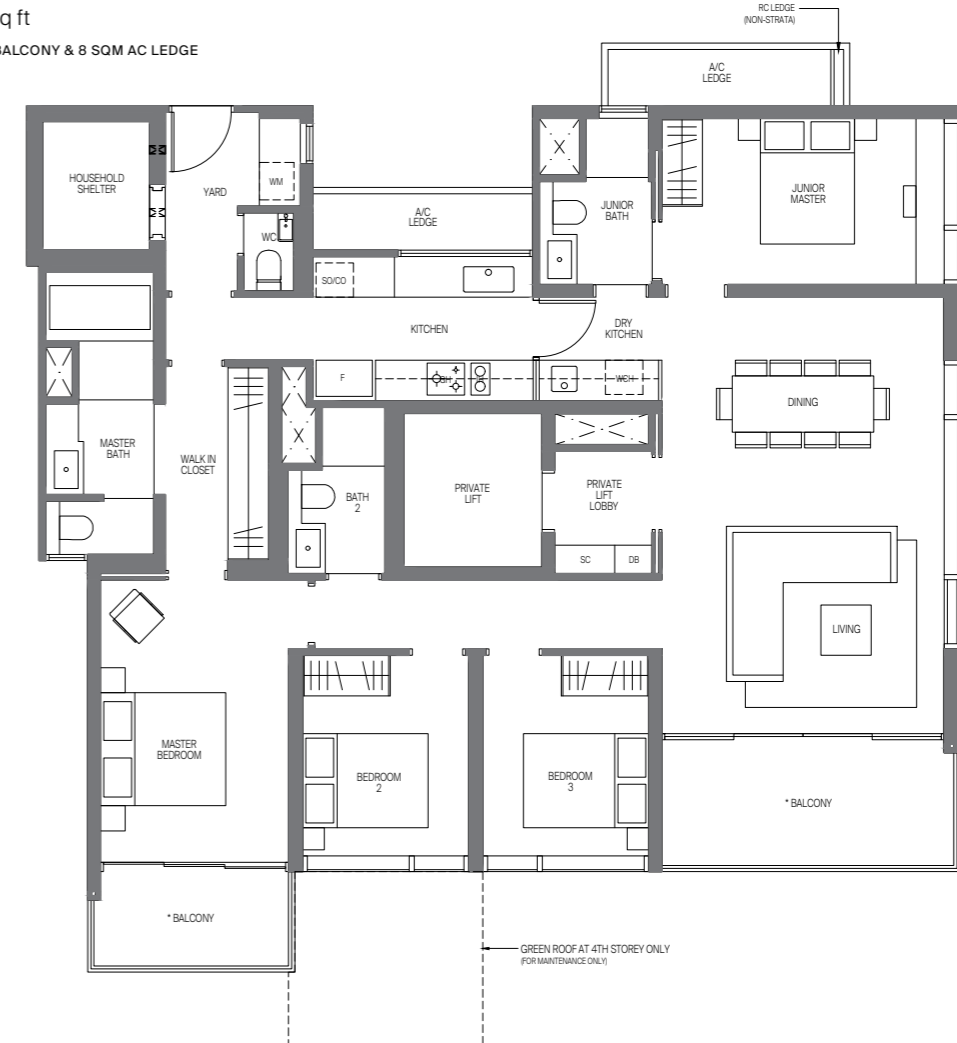
Tower 18
UNIT
#04-17 to #29-17

Type D3P-R (PL)

168 sq m | 1808 sq ft
INCLUSIVE OF 16 SQM BALCONY & 8 SQM AC LEDGE

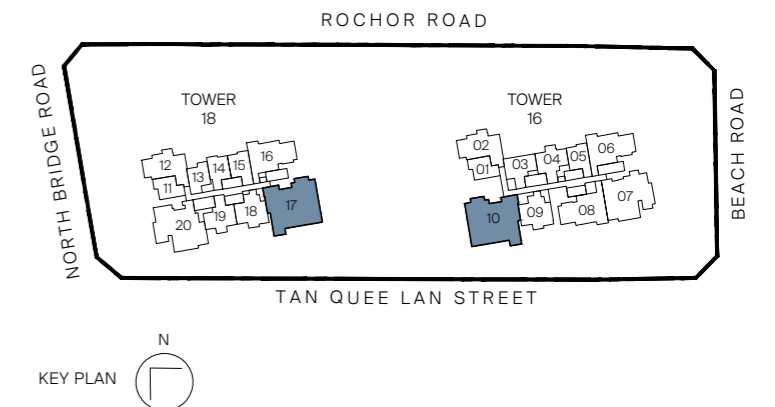
Tower 16
UNIT
#30-10*

* MIRROR IMAGE



Legend (where applicable)

- | | |
|-------------------------------|--------------------------------|
| F - Fridge | WCH - Wine Chiller |
| IH - Induction Hob | W - Washer |
| GH - Gas Hob | D - Dryer |
| WM - Washer cum Dryer | DB - Distribution Board |
| SO - Steam Oven | SC - Shoe Cabinet |
| CO - Convectional Oven | |



All plans are subjected to amendments as may be approved by the relevant authorities. Floor areas are approximate measurements and are subjected to final survey.
* Balconies/PES are not to be enclosed except with a balcony screen which has been approved and complies with the Competent Authority's guidelines.
For an illustration of the approved balcony screen, please refer to this brochure



4-BEDROOM PENTHOUSE 顶层豪宅

Type PH 1 (PL)

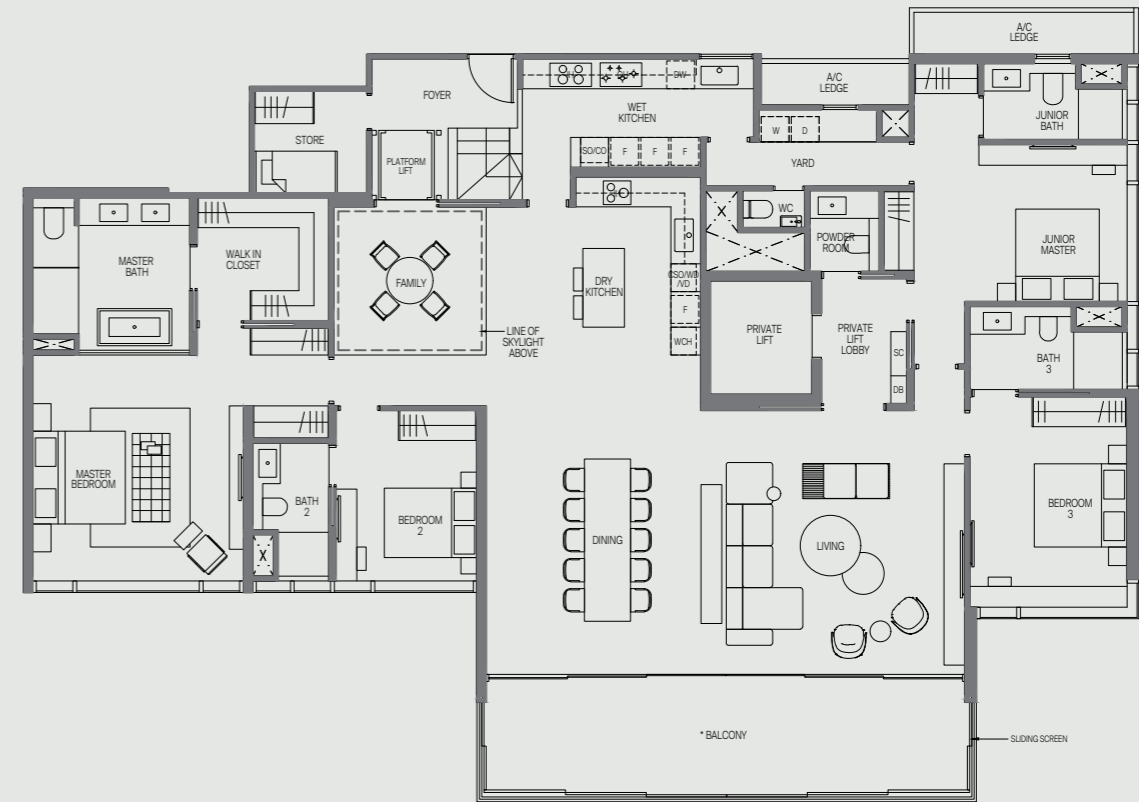
304 sq m | 3272 sq ft

INCLUSIVE OF 28 SQM BALCONY & 8 SQM AC LEDGE

Tower 18

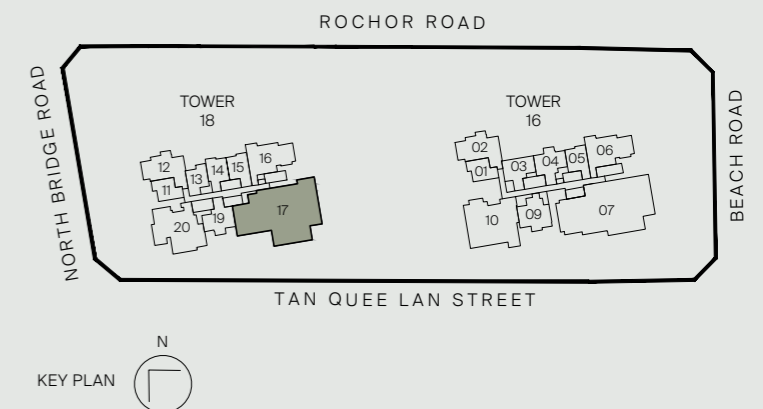
UNIT

#30-17



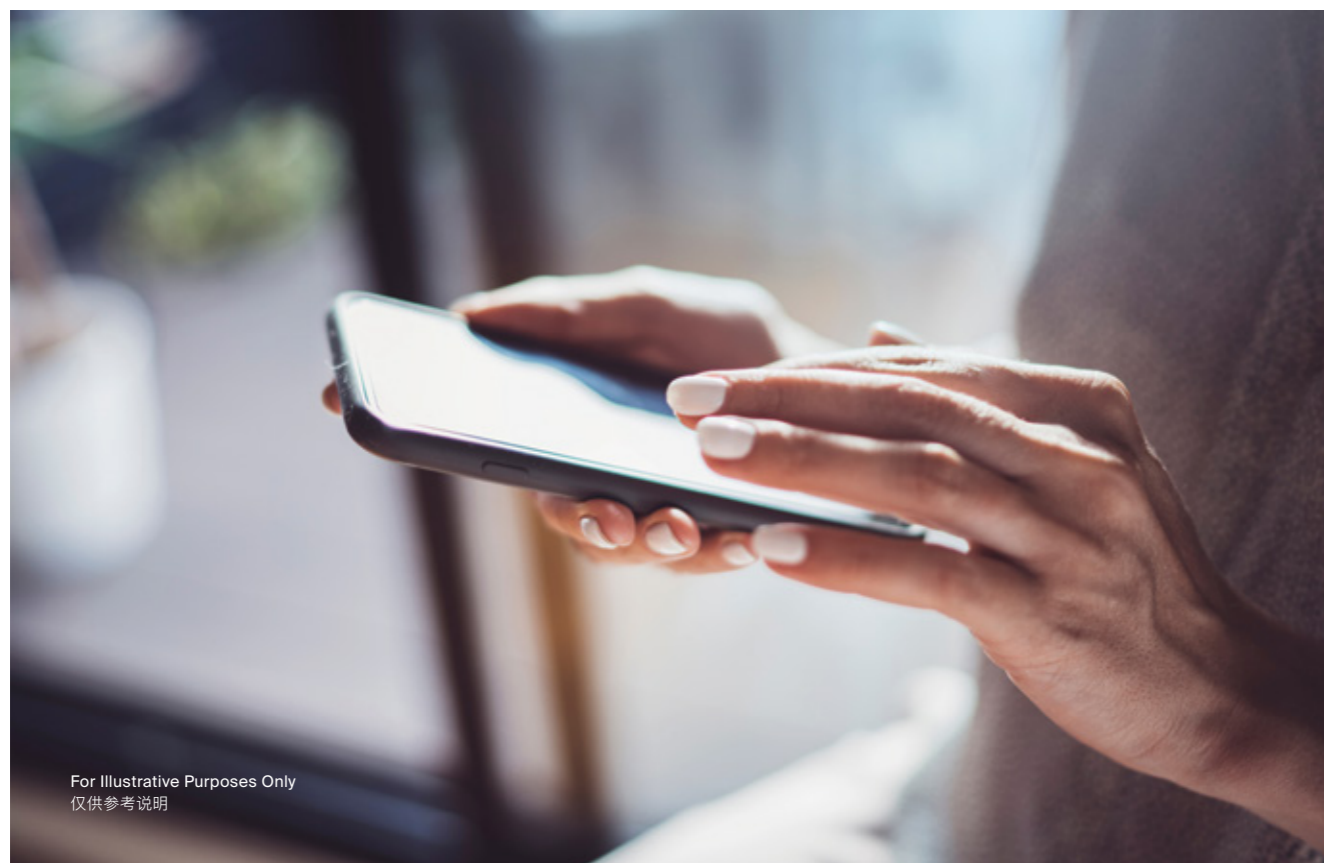
Legend (where applicable)

- | | |
|-------------------------------|--------------------------------|
| F - Fridge | VD - Vacuum Drawer |
| IH - Induction Hob | WD - Warmer Drawer |
| GH - Gas Hob | DW - Dishwasher |
| SO - Steam Oven | W - Washer |
| CSO - Combi Steam Oven | D - Dryer |
| CO - Convectional Oven | DB - Distribution Board |
| WCH - Wine Chiller | SC - Shoe Cabinet |



All plans are subjected to amendments as may be approved by the relevant authorities. Floor areas are approximate measurements and are subjected to final survey.
 *Balconies/PES are not to be enclosed except with a balcony screen which has been approved and complies with the Competent Authority's guidelines.
 For an illustration of the approved balcony screen, please refer to this brochure

Smart Home 智能家居



Motion sensor for
foyer lighting



Control of Lighting



Smoke Detector



Control of fan coil



Smart digital main
door lockset

Make connected living a seamless reality with a technology-enabled smart home. Your residence at Midtown Modern comes equipped with state-of-the-art features such as smart digital main door lockset, app-controlled lighting and motion sensor light fitting, to give you greater convenience, flexibility and security.

智能电子门锁、手机应用操作智能灯具、自动人体感应照明系统，名汇庭苑的智能家居让用户生活科技起来，智慧生活，一手掌握！

Trusted Brands & Fittings 品牌厨卫家装



De Dietrich

TOTO



LIEBHERR

The range of appliances and fittings at Midtown Modern is thoughtfully curated to offer residents utmost assurance and exceptional quality of life. Combining the finest materials with cutting edge technology, these top-of-the-line brands are synonymous with innovation, design and commitment to sustainability.

在名汇庭苑，所有的家电和饰材都经过精心挑选。我们选用最上乘的材料和最先进的科技，并配备以创新、设计和绿色而闻名的家电品牌，以确保住户拥有安心和超凡的居住体验。

V-Zug and Liebherr fittings are only available for penthouse units.
V-Zug和Liebherr仅限于顶层豪宅

Guocoland 国浩集团

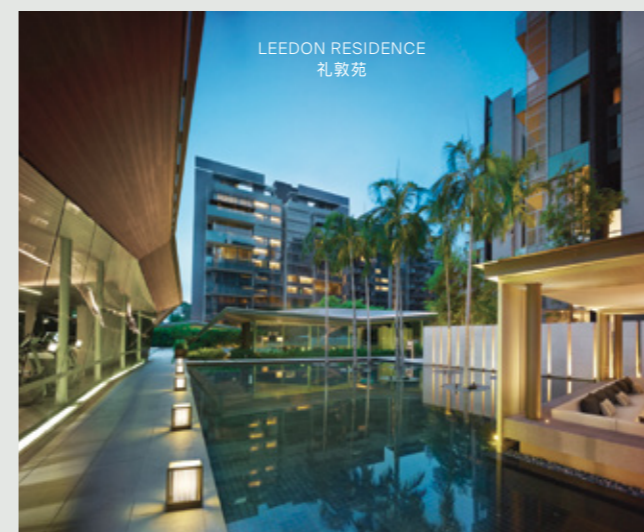
A Leading Developer
in Mixed-Use Development
综合体开发项目的领导者



Listed on the Singapore Exchange since 1978, GuocoLand Limited ("GuocoLand") is an award-winning real estate developer distinguished by quality, innovative design and concepts. In Singapore, the Group has successfully developed 36 residential projects yielding approximately 11,000 apartments and homes, and the iconic integrated mixed-use development Guoco Tower – the tallest building in the city-state reaching a height of 290 metres. With established operations in Singapore, China and Malaysia, GuocoLand's portfolio comprises residential, hospitality, commercial, retail and integrated developments spanning across the region.

国浩房地产有限公司(简称“国浩集团”)于1978年在新加坡交易所上市，是一家屡获殊荣的房地产开发商，以优质、创新的设计和理念著称。在新加坡，该集团已成功开发了36个住宅项目，产出约1.1万套公寓和住宅，以及标志性的综合体开发项目国浩大厦(Guoco Tower)，高达290米，是新加坡最高的建筑。国浩集团在新加坡、中国和马来西亚建立了业务，其投资组合包括住宅、酒店、商业、零售和跨地区的综合开发项目。

MODERN LUXURY COLLECTION | 时尚豪宅系列



Jointly Developed With 合作发展商



Hong Leong Holdings Limited (HLHL) was established in 1968 as the privately-held property development and investment arm of the Hong Leong Group. As one of the pioneers of the real estate scene in Singapore, HLHL has since emerged as a major player in the property market. As a forward-looking developer that continues to pursue improvement and expansion while maintaining its high design, customer service and sustainability standards, HLHL takes pride in being responsible for some of the most distinctive and iconic residential developments in Singapore.

豐隆實業有限公司成立于1968年，是豐隆集团私拥的属下公司之一，专于产业的发展与投资。作为新加坡房地产业的先驱，豐隆實業有限公司至今已经成为房地产业的翘楚。秉持着不断追求进步与扩展企业的信念，同时提供高水准的设计、服务及品质，豐隆實業有限公司在新加坡拥有多项独特、经典并引以为傲的项目。

HONG REALTY (PTE) LIMITED

Hong Realty (Private) Limited is an established real estate developer incorporated in 1962.

Hong Realty (Private) Limited 是于1962年成立的知名发展商



(65) 6225 9000

WWW.GUOCOMIDTOWN.COM/MIDTOWNMODERN

Name of housing project: Midtown Modern • Name of housing developer: Midtown Modern Pte. Ltd. (Co. Reg. No. 201931235H) • Licence No. of housing developer: C1369 • Tenure of land: leasehold 99 years commencing on 10 December 2019 • Encumbrances on land: encumbered to Oversea-Chinese Banking Corporation Limited (as mortgagee and security trustee) pursuant to Mortgage No. IF/940383F • Location of the housing project: Lot 01062X of TS12 at Tan Quee Lan Street • Expected date of vacant possession: 30 June 2026 • Expected date of legal completion: 30 June 2029

DISCLAIMER: The information and contents herein are current at the time of printing and are provided on an "as is" and "as available" basis. While all reasonable care has been taken in preparing this brochure, the developer and its agents shall not be held responsible for any inaccuracies or the completeness of the information and contents herein. All renderings, illustrations, pictures, photographs and other graphic representations and references are artist's impression(s) only and may be subject to changes and deviation as further made by the developer or as required by the relevant authorities. Nothing herein shall form part of an offer or contract or be construed as any representations by the developer or its agents. The plans drawn herein may not be to scale, and the areas and measurements stated herein are approximate and are subject to adjustments on final survey.

The image features a lush, green landscape with a variety of trees and plants. In the foreground, there is a pond with lily pads and pink flowers. To the left, a building with large windows is visible. The GuocoLand logo, consisting of a stylized white icon of three curved lines, is positioned to the left of the text "GuocoLand" in a white, sans-serif font. The background shows a dense forest of trees under a clear blue sky.

 GuocoLand